



1

2

3

4

Document Number: DSP1003

Date: 2007-02-12

Version: 1.0.0a

5 **Policy Profile**

6 **Document Type: Specification**

7 **Document Status: Preliminary Standard**

8 **Document Language: E**

Policy Profile

9 Copyright Notice

10 Copyright © 2007, 2005 Distributed Management Task Force, Inc. (DMTF). All rights reserved.

11 DMTF is a not-for-profit association of industry members dedicated to promoting enterprise and systems
12 management and interoperability. Members and non-members may reproduce DMTF specifications and
13 documents for uses consistent with this purpose, provided that correct attribution is given. As DMTF
14 specifications may be revised from time to time, the particular version and release date should always be
15 noted.

16 Implementation of certain elements of this standard or proposed standard may be subject to third party
17 patent rights, including provisional patent rights (herein "patent rights"). DMTF makes no representations
18 to users of the standard as to the existence of such rights, and is not responsible to recognize, disclose,
19 or identify any or all such third party patent right, owners or claimants, nor for any incomplete or
20 inaccurate identification or disclosure of such rights, owners or claimants. DMTF shall have no liability to
21 any party, in any manner or circumstance, under any legal theory whatsoever, for failure to recognize,
22 disclose, or identify any such third party patent rights, or for such party's reliance on the standard or
23 incorporation thereof in its product, protocols or testing procedures. DMTF shall have no liability to any
24 party implementing such standard, whether such implementation is foreseeable or not, nor to any patent
25 owner or claimant, and shall have no liability or responsibility for costs or losses incurred if a standard is
26 withdrawn or modified after publication, and shall be indemnified and held harmless by any party
27 implementing the standard from any and all claims of infringement by a patent owner for such
28 implementations.

29

CONTENTS

31	Foreword	6
32	Introduction	7
33	1 Scope	9
34	2 Normative References	9
35	2.1 Approved References	9
36	2.2 References under Development	9
37	2.3 Other References	9
38	3 Terms and Definitions	9
39	4 Symbols and Abbreviated Terms	11
40	5 Synopsis	11
41	6 Description	11
42	6.1 Whitebox Policies	13
43	6.2 Blackbox Policies	14
44	7 Implementation	14
45	7.1 CIM_QueryCondition (Optional)	15
46	7.2 CIM_MethodAction (Optional)	15
47	7.3 CIM_CompoundPolicyAction (Optional)	15
48	7.4 CIM_CompoundPolicyCondition (Optional)	15
49	7.5 CIM_ElementInPolicyRoleCollection (Optional)	16
50	7.6 CIM_PolicyAction (Optional)	16
51	7.7 CIM_PolicyActionInPolicyAction (Optional)	16
52	7.8 CIM_PolicyActionInPolicyRule (Optional)	17
53	7.9 CIM_PolicyCondition (Optional)	17
54	7.10 CIM_PolicyConditionInPolicyCondition (Optional)	17
55	7.11 CIM_PolicyConditionInPolicyRule (Optional)	17
56	7.12 CIM_PolicyRoleCollection (Optional)	18
57	7.13 CIM_PolicyRoleCollectionInSystem (Conditional)	18
58	7.14 CIM_PolicyRule	18
59	7.15 CIM_PolicyRuleInSystem	19
60	7.16 CIM_PolicySetAppliesToElement (Optional)	19
61	7.17 CIM_PolicySetComponent (Optional)	19
62	7.18 CIM_PolicySetInRoleCollection (Optional)	19
63	7.19 CIM_PolicySetValidityPeriod (Optional)	19
64	7.20 CIM_PolicyTimePeriodCondition (Optional)	20
65	7.21 CIM_ReusablePolicy (Optional)	22
66	7.22 CIM_ReusablePolicyContainer (Optional)	22
67	8 Methods	22
68	8.1 CIM_PolicyRoleCollection. ActivatePolicySet()	22
69	8.2 CIM_PolicyRoleCollection. DeactivatePolicySet()	22
70	8.3 Profile Conventions for Operations	23
71	8.4 CIM_QueryCondition	24
72	8.5 CIM_MethodAction	24
73	8.6 CIM_PolicyRule	24
74	8.7 CIM_PolicyCondition	24
75	8.8 CIM_PolicyAction	24
76	8.9 CIM_PolicySetAppliesToElement	24
77	8.10 CIM_PolicyConditionInPolicyRule	24
78	8.11 CIM_PolicyActionInPolicyRule	25
79	8.12 CIM_CompoundPolicyAction	25
80	8.13 CIM_CompoundPolicyCondition	25
81	8.14 CIM_ElementInPolicyRoleCollection	25
82	8.15 CIM_PolicyActionInPolicyAction	25

Policy Profile

83	8.16	CIM_PolicyConditionInPolicyCondition	26
84	8.17	CIM_PolicyRoleCollection	26
85	8.18	CIM_PolicyRoleCollectionInSystem	26
86	8.19	CIM_PolicyRuleInSystem	27
87	8.20	CIM_PolicySetComponent	27
88	8.21	CIM_PolicySetInRoleCollection	27
89	8.22	CIM_PolicySetValidityPeriod	28
90	8.23	CIM_PolicyTimePeriodCondition	28
91	8.24	CIM_ReusablePolicy	28
92	8.25	CIM_ReusablePolicyContainer	28
93	9	Use Cases	28
94	9.1	Object Diagrams	28
95	9.2	Blackbox Policy Object Diagram	29
96	9.3	Propagate HealthState to OperationalStatus	30
97	10	CIM Elements	30
98	10.1	CIM_QueryCondition	32
99	10.2	CIM_MethodAction	32
100	10.3	CIM_PolicyRule	33
101	10.4	CIM_PolicyCondition	33
102	10.5	CIM_PolicyAction	34
103	10.6	CIM_PolicySetAppliesToElement	34
104	10.7	CIM_PolicyConditionInPolicyRule	34
105	10.8	CIM_PolicyActionInPolicyRule	35
106	10.9	CIM_CompoundPolicyAction	35
107	10.10	CIM_CompoundPolicyCondition	36
108	10.11	CIM_ElementInPolicyRoleCollection	36
109	10.12	CIM_PolicyActionInPolicyAction	37
110	10.13	CIM_PolicyConditionInPolicyCondition	37
111	10.14	CIM_PolicyRoleCollection	37
112	10.15	CIM_PolicyRoleCollectionInSystem	38
113	10.16	CIM_PolicyRuleInSystem	38
114	10.17	CIM_PolicySetComponent	38
115	10.18	CIM_PolicySetInRoleCollection	39
116	10.19	CIM_PolicySetValidityPeriod	39
117	10.20	CIM_PolicyTimePeriodCondition	40
118	10.21	CIM_ReusablePolicy	40
119	10.22	CIM_ReusablePolicyContainer	41
120		ANNEX A (Informative) Change Log	42
121		ANNEX B (informative) Acknowledgments	43
122			
123		Figures	
124		Figure 1 – Policy Profile: Class Diagram	13
125		Figure 2 – Blackbox Health Propagation Policy Diagram	29
126		Figure 3 – Health Propagation Policy Object Diagram	30
127			
128		Tables	
129		Table 1 – Referenced Profiles	11
130		Table 2 – Operations: CIM_PolicySetAppliesToElement	24
131		Table 3 – Operations: CIM_PolicyConditionInPolicyRule	24

132 Table 4 – Operations: CIM_PolicyActionInPolicyRule 25

133 Table 5 – Operations: CIM_ElementInPolicyRoleCollection 25

134 Table 6 – Operations: CIM_PolicyActionInPolicyAction 25

135 Table 7 – Operations: CIM_PolicyConditionInPolicyCondition 26

136 Table 8 – Operations: CIM_PolicyRoleCollectionInSystem 26

137 Table 9 – Operations: CIM_PolicyRuleInSystem 27

138 Table 10 – Operations: CIM_PolicySetComponent 27

139 Table 11 – Operations: CIM_PolicySetInRoleCollection 27

140 Table 12 – Operations: CIM_PolicySetValidityPeriod 28

141 Table 13 – Operations: CIM_ReusablePolicy 28

142 Table 14 – CIM Elements: Policy Profile 30

143 Table 15 – Class: CIM_QueryCondition 32

144 Table 16 – Class: CIM_MethodAction 32

145 Table 17 – Class: CIM_PolicyRule 33

146 Table 18 – Class: CIM_PolicyCondition 33

147 Table 19 – Class: CIM_PolicyAction 34

148 Table 20 – Class: CIM_PolicySetAppliesToElement 34

149 Table 21 – Class: CIM_PolicyConditionInPolicyRule 35

150 Table 22 – Class: CIM_PolicyActionInPolicyRule 35

151 Table 23 – Class: CIM_CompoundPolicyAction 36

152 Table 24 – Class: CIM_CompoundPolicyCondition 36

153 Table 25 – Class: CIM_ElementInPolicyRoleCollection 37

154 Table 26 – Class: CIM_PolicyActionInPolicyAction 37

155 Table 27 – Class: CIM_PolicyConditionInPolicyCondition 37

156 Table 28 – Class: CIM_PolicyRoleCollection 38

157 Table 29 – Class: CIM_PolicyRoleCollectionInSystem 38

158 Table 30 – Class: CIM_PolicyRuleInSystem 38

159 Table 31 – Class: CIM_PolicySetComponent 39

160 Table 32 – Class: CIM_PolicySetInRoleCollection 39

161 Table 33 – Class: CIM_PolicySetValidityPeriod 40

162 Table 34 – Class: CIM_PolicyTimePeriodCondition 40

163 Table 35 – Class: CIM_ReusablePolicy 41

164 Table 36 – Class: CIM_ReusablePolicyContainer 41

165

Foreword

167 The *Policy Profile* (DSP1003) was prepared by the Policy Working Group of the DMTF.

168 DMTF is a not-for-profit association of industry members dedicated to promoting enterprise and systems
169 management and interoperability.

170

Introduction

171 The information in this specification should be sufficient for a provider or consumer of this data to
172 unambiguously identify the classes, properties, methods, and values that shall be instantiated and
173 manipulated to represent and manage policy collections and rules modeled using the DMTF Common
174 Information Model (CIM) core and extended model definitions.

175 The target audience for this specification is implementers who are writing CIM-based providers or
176 consumers of management interfaces that represent the components described in this document.

177

Policy Profile

178 1 Scope

179 The *Policy Profile* is an abstract profile that extends the management capability of referencing profiles by
180 adding the capability to represent policies that apply to Managed Elements and optionally define specific
181 CQL or CIM-SPL statements that represent the policies. The *Policy Profile* is to be specialized by profiles
182 that define specific policy algorithms and optionally define CQL or CIM-SPL statements for particular
183 policies.

184 2 Normative References

185 The following referenced documents are indispensable for the application of this document. For dated
186 references, only the edition cited applies. For undated references, the latest edition of the referenced
187 document (including any amendments) applies.

188 2.1 Approved References

189 DMTF [DSP0004](#), *CIM Infrastructure Specification 2.3.0*

190 DMTF [DSP0200](#), *CIM Operations over HTTP 1.2.0*

191 DMTF [DSP1000](#), *Management Profile Specification Template*

192 DMTF [DSP1001](#), *Management Profile Specification Usage Guide*

193

194 2.2 References under Development

195 DMTF [DSP1033](#), *Profile Registration Profile*

196 DMTF [DSP0202](#), *CIM Query Language Specification*

197 DMTF [DSP0231](#), *CIM Simplified Policy Language*

198

199 2.3 Other References

200 ISO/IEC Directives, Part 2, *Rules for the structure and drafting of International Standards*,
201 <http://isotc.iso.org/livelink/livelink.exe?func=ll&objId=4230456&objAction=browse&sort=subtype>

202 Unified Modeling Language (UML) from the Open Management Group (OMG), <http://www.uml.org>

203 3 Terms and Definitions

204 For the purposes of this document, the following terms and definitions apply. For the purposes of this
205 document, the terms and definitions given in [DSP1033](#) and [DSP1001](#) also apply.

206 3.1

207 can

208 used for statements of possibility and capability, whether material, physical, or causal

Policy Profile

- 209 **3.2**
210 **cannot**
211 used for statements of possibility and capability, whether material, physical, or causal
- 212 **3.3**
213 **conditional**
214 indicates requirements to be followed strictly to conform to the document when the specified conditions
215 are met
- 216 **3.4**
217 **mandatory**
218 indicates requirements to be followed strictly to conform to the document and from which no deviation is
219 permitted
- 220 **3.5**
221 **may**
222 indicates a course of action permissible within the limits of the document
- 223 **3.6**
224 **need not**
225 indicates a course of action permissible within the limits of the document
- 226 **3.7**
227 **optional**
228 indicates a course of action permissible within the limits of the document
- 229 **3.8**
230 **referencing profile**
231 indicates a profile that owns the definition of this class and can include a reference to this profile in its
232 "Referenced Profiles" table
- 233 **3.9**
234 **shall**
235 indicates requirements to be followed strictly to conform to the document and from which no deviation is
236 permitted
- 237 **3.10**
238 **shall not**
239 indicates requirements to be followed strictly to conform to the document and from which no deviation is
240 permitted
- 241 **3.11**
242 **should**
243 indicates that among several possibilities, one is recommended as particularly suitable, without
244 mentioning or excluding others, or that a certain course of action is preferred but not necessarily required
- 245 **3.12**
246 **should not**
247 indicates that a certain possibility or course of action is deprecated but not prohibited
- 248 **3.13**
249 **unspecified**
250 indicates that this profile does not define any constraints for the referenced CIM element or operation

251 **3.14**
 252 **policy language**
 253 refers to CQL and CIM-SPL as the two defined languages
 254

255 **4 Symbols and Abbreviated Terms**

256 **4.1**
 257 **CQL**
 258 CIM Query Language

259 **4.2**
 260 **CIM-SPL**
 261 CIM Simplified Policy Language

262 **5 Synopsis**

263 Profile Name: *Policy*

264 Version: 1.0.0e

265 Organization: DMTF

266 CIM schema version: 2.12

267 Central Class: CIM_PolicyRule

268 Scoping Class: CIM_System

269 This abstract profile specification shall not be directly implemented; implementations shall be based on a
 270 profile specification that specializes the requirements of this profile.

271 The *Policy Profile* is an abstract profile that extends the management capability of referencing profiles by
 272 adding the capability to represent policies that apply to Managed Elements and optionally define specific
 273 CQL or CIM-SPL statements that represent the policies. The profile is to be specialized by profiles that
 274 define specific policy algorithms and optionally define CQL or CIM-SPL statements for particular policies.

275 Table 1 lists profiles upon which this profile has a dependency.

276 **Table 1 – Referenced Profiles**

Profile Name	Organization	Version	Relationship	Behavior

277 **6 Description**

278 The *Policy Profile* is an abstract profile that defines the CIM elements and constraints for specifying
 279 policies that affect Managed Elements. Architecture/implementation details are out of the scope of this
 280 abstract profile.

281 A *policy* defines actions that are taken under a set of conditions. Generally, a policy rule is automated. A
 282 policy defines what is to be done in the users stead and under what circumstances. The policy rule itself
 283 is generally not the entity that carries out the action. Instead, a policy rule is assumed to be the entity that
 284 directs the change. Just as when an end user requests that a host reboot, that user is not the entity that

Policy Profile

285 informs the host hardware to reboot directly; policy rules request that the action be taken on its behalf. As
286 such, a policy rule reacts to its own environment.

287 A condition is expressed as the state of one or more Managed Elements. The description of the state
288 could be simple or complex. It can be described in words or could be defined in terms of values of the
289 properties of the CIM instances.. Regardless of the complexity of the state in the condition, the condition
290 itself defines state criteria that are considered as a whole. If the states of the Managed Elements are as
291 defined in the condition, then the condition itself is evaluated as TRUE. Conditions could be notified of a
292 state change that is triggered.

293 An *action* defines how the state ought to change as a result of the action itself being invoked. A policy
294 action defines that a single action is taken. Actions can succeed or fail. The action could be described in
295 words or defined in terms of the properties or methods of CIM instances.

296 A policy rule is evaluated. A policy rule can be assumed to be executed periodically. A PolicyRule may be
297 associated with one or more policy time periods, indicating the schedule according to which the policy
298 rule is active. At all times that fall outside these time periods, the PolicyRule is inactive. A PolicyRule is
299 treated as active at ALL times, if it does not specify a PolicyTimePeriodCondition. The policy rule is
300 executed by a special type of policy that depends on time or could be executed on a schedule defined
301 elsewhere. Otherwise, a policy rule could be evaluated as a result of its trigger conditions being notified of
302 a state change.

303 During the policy evaluation, the states defined in the associated conditions are compared to the actual
304 states of the related Managed Elements. Each condition is considered in order. The order could be
305 defined explicitly or implicitly. Implicitly ordered conditions are those that depend on the output of the
306 evaluation of other conditions in order to be evaluated. If enough conditions are evaluated to be TRUE,
307 the actions are then taken. Likewise, actions could be ordered explicitly or implicitly. Implicitly ordered
308 actions are those that require the evaluation of conditions or execution of actions for themselves to be
309 executed.

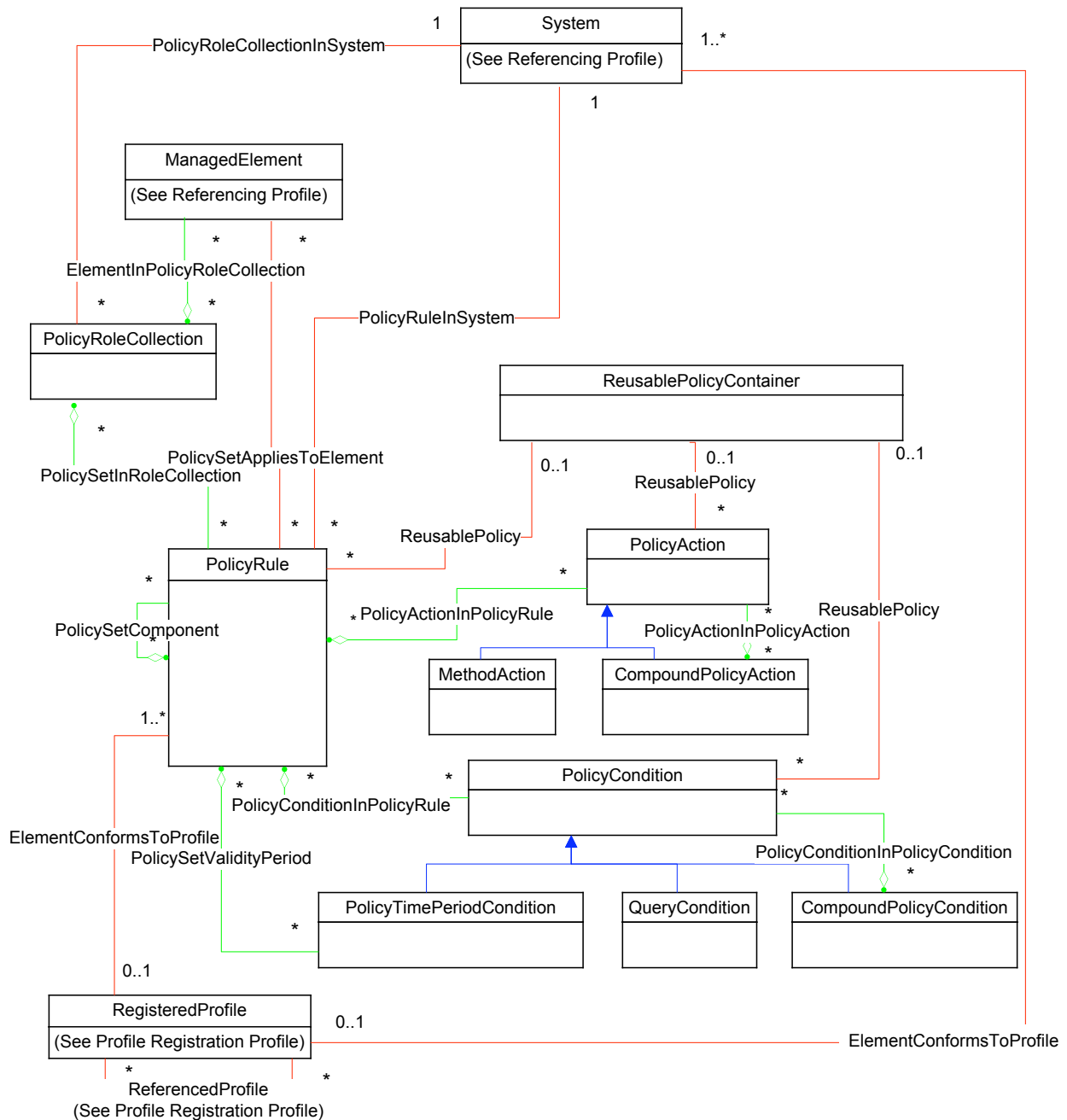
310 Policy rules must be defined in terms of a response. The policy rule must be defined without depending
311 on other policy rules.

312 Figure 1 represents the class schema for the *Policy Profile*. For simplicity, the prefix CIM_ has been
313 removed from the names of the classes.

314 Functionality within the scope of this profile includes:

- 315 • a specification of the CIM_PolicyRule class and optional related CIM_PolicyCondition and
316 CIM_PolicyAction classes

317 Functionality explicitly excluded from the scope of this profile includes how the specific CQL or CIM-SPL
318 definitions for policy conditions and actions might be modified by the client. This is defined further in
319 specialized profile.



320

321

Figure 1 – Policy Profile: Class Diagram

322 6.1 Whitebox Policies

323 The term “Whitebox” is applied to policies that have policy rules that can be inspected. Whitebox policy
 324 rules are defined in terms of policy language statements that directly interact with the model. As such,
 325 special subclasses of CIM_PolicyCondition and CIM_PolicyAction, CIM_QueryCondition and
 326 CIM_MethodAction respectively, are used to contain the expression of how the CIM representation or
 327 state of the model causes the policy to act, and what CIM action is imposed on the model as a result.

328 The benefit of Whitebox policies is that they can be inspected, they are programmatically deterministic,
 329 and they have precisely the same meaning and result to observers without any prior knowledge. Given

Policy Profile

330 the CIM and the CQL standard and this definition of the behavior and rules of policies, the policy rule
331 algorithms as expressed in CQL can be interpreted by both the CIM clients that read them and the
332 systems that host and evaluate them.

333 A CIM_QueryCondition instance contains a CQL statement that itself expresses the state whose
334 attainment results in the condition being evaluated as TRUE. When such a CQL statement is evaluated,
335 the CQL is executed and a result is produced. This result is available to other conditions and actions that
336 are members of the policy rule. If the Query Condition produces an empty result, it is considered to be
337 evaluated as FALSE. The result itself can be referenced as a CIM class in CQL construct by using its
338 QueryResultName property.

339 A CIM_QueryCondition may be dependent on the results of other queries. Specifically, a condition may
340 be dependent on other conditions. This result may be joined with other classes or other results to produce
341 additional results. A dependence of several conditions might be produced such that the set resembles a
342 decision tree. The least dependent conditions must be evaluated first. The most dependent conditions
343 must be evaluated last.

344 A CIM_MethodAction instance defines the query that itself builds an intrinsic or extrinsic method call. The
345 components of this query must contain first the object name of the method to be called and, thereafter, a
346 list of named parameters. The parameter names and types must match those of the method declaration.
347 Type conversion is supplied by the associated CQL implementation. The result of the selected list applies
348 to the referenced method as input parameters. If the result of the query produces an empty result, the
349 method will not be executed. Such an execution must be considered successful. The method is executed
350 once for every row of the results, which in turn provides the parameters for each method call.

351 When the CIM_MethodAction query executes, it must apply its action to the model. The result of the
352 method execution shall be the list of output parameters for the method; each, in turn, shall be identifiable
353 by its parameter name.

354 The query result of the conditions and the method result of the action may be used by other actions to
355 construct method calls.

356 Such policies can take several execution paths based on the conditions that are evaluated as TRUE and
357 the actions taken as a result. The effect of some of the conditions evaluated as TRUE may result in only
358 some of the actions being taken. For a given policy rule, a different set of conditions may produce a
359 different set of actions depending on the evaluation.

360 6.2 Blackbox Policies

361 The “Blackbox” term is applied to policies that have condition and action algorithms defined but cannot be
362 inspected through the CIM model. Blackbox policy rules are represented in CIM by policy rule names or
363 labels, but they are not accompanied by classes that contain specific condition or action query strings.
364 The model manipulation algorithms that represent a Blackbox policy is defined in a profile that describes
365 the algorithms in sufficient detail for consistent implementation by instrumentation.

366 Determining whether a policy rule represents a blackbox policy can be accomplished by inspecting
367 whether an instance of CIM_RegisteredProfile, which specifies a blackbox policy is associated with an
368 instance of CIM_PolicyRule, which represents the policy rule in question, via the
369 CIM_ElementConformsToProfile association.

370 7 Implementation

371 This section details requirements and guidelines for propagating and formulating certain properties of the
372 classes of this profile. Required methods are described in section 8 (“Methods”), and properties are
373 described in section 10 (“CIM Elements”).

374 7.1 CIM_QueryCondition (Optional)

375 Instances of CIM_QueryCondition are optional and may be used to define the criteria for generating a set
376 of query results that are accessible to other QueryConditions or MethodActions of the same PolicyRule.

377

378 7.2 CIM_MethodAction (Optional)

379 Instances of CIM_MethodAction are optional and may be used to invoke methods as defined by a query.

380

381 7.3 CIM_CompoundPolicyAction (Optional)

382 Instances of CIM_CompoundPolicyAction are optional and may be used to represent an expression that
383 consists of an ordered sequence of actions represented by instances of the CIM_PolicyAction class.

384 The ordering of action terms shall be represented by instances of the CIM_PolicyActionInPolicyAction
385 aggregation.

386 7.3.1 Action Sequences

387 Each action in an explicit action sequence is represented by a CIM_PolicyAction instance aggregated by
388 a CIM_PolicyActionInPolicyAction instance.

389 The order of the actions in the sequence shall be specified by the ActionOrder property of each
390 CIM_PolicyActionInPolicyAction aggregation instance. An ActionOrder property value of 0 shall mean that
391 the aggregated CIM_PolicyAction instance may be executed at any time in the execution sequence. Non-
392 zero values of ActionOrder indicate a relative priority, in which lower numbers shall be executed before
393 higher numbers. Two or more instances of CIM_PolicyAction aggregated with the same non-zero value
394 may be executed in any order, but after all instances associated with lower non-zero values and before all
395 instances with higher non-zero values.

396 The optional SequencedActions property of CIM_CompoundPolicyAction specifies the order of execution
397 of the actions in the sequence.

398 The optional ExecutionStrategy property of CIM_CompoundPolicyAction defines the strategy to be used
399 in executing the action sequence.

400

401 7.4 CIM_CompoundPolicyCondition (Optional)

402 Instances of CIM_CompoundPolicyCondition are optional and shall be used to represent a condition
403 expression. Instances of CIM_PolicyCondition are composed into a condition expression by instances of
404 the CIM_PolicyConditionInPolicyCondition aggregation.

405 The CIM_PolicyCondition instances shall be aggregated into an instance of
406 CIM_CompoundPolicyCondition forming a set of conditions.

407 ConditionListType is an optional property of a CIM_CompoundPolicyCondition instance. It is used with
408 the GroupNumber and ConditionNegated properties of each CIM_PolicyConditionInPolicyCondition
409 aggregation instance to collectively specify an explicit condition expression. The set of individual terms of
410 an explicit condition expression is represented by the aggregated CIM_PolicyCondition instances.

411 The set of terms is divided into one or more subsets. Two instances of CIM_PolicyCondition that belong
412 to the same explicit condition expression shall have the same value for the
413 CIM_PolicyConditionInPolicyCondition.GroupNumber property for the instances of

Policy Profile

414 CIM_PolicyConditionInPolicyCondition that associate them to an instance of
415 CIM_CompoundPolicyCondition.

416 The ConditionNegated property specifies whether the associated condition must be negated when
417 evaluated in the condition expression.

418 The ConditionListType property shall have one of the following two values:

419 • Disjunctive Normal Form (DNF): Each term is evaluated for TRUE or FALSE. If the
420 ConditionNegated property is TRUE for the term, the term's evaluation result is negated. Then,
421 the evaluation result for each term that belongs to a particular subset (the same GroupNumber)
422 is joined together with AND. Finally the result of evaluating each subgroup is joined together
423 with OR.

424 • Conjunctive Normal Form (CNF): Each term is evaluated for TRUE or FALSE. If the
425 ConditionNegated property is TRUE for the term, the term's evaluation result is negated. Then,
426 the evaluation result for each term that belongs to a particular subset (the same GroupNumber)
427 is joined together with OR. Finally the result of evaluating each subgroup is joined together with
428 AND.

429 The Disjunctive Normal Form (DNF) is the default value for ConditionListType.

430 7.5 CIM_ElementInPolicyRoleCollection (Optional)

431 An instance of CIM_ElementInPolicyRoleCollection is an optional aggregation that may be used to
432 associate a CIM_ManagedElement instance with an instance of CIM_PolicyRoleCollection.

433 Use of this association shall indicate that instances of CIM_PolicySet, which are aggregated through
434 CIM_PolicySetInRoleCollection into the referenced instance of CIM_PolicyRoleCollection, may be applied
435 to the referenced instance of CIM_ManagedElement.

436 Constraints on the behavior of the policy as applied to instances of CIM_ManagedElement may be further
437 specified in a specialized policy profile.

438

439 7.6 CIM_PolicyAction (Optional)

440 Instances of the abstract class CIM_PolicyAction are optional. Each instance represents an explicit
441 specification of an action.

442 CIM_PolicyAction instances may be aggregated by CIM_PolicyActionInPolicyRule into one or more
443 instances of CIM_PolicyRule or by CIM_PolicyActionInPolicyAction into one or more instances of
444 CIM_CompoundPolicyAction. These associations, together with the aggregating instances, define the
445 execution order of an aggregated set of CIM_PolicyAction instances.

446 If a CIM_PolicyAction instance may be reused, it shall be aggregated into one
447 CIM_ReusablePolicyContainer instance.

448 7.7 CIM_PolicyActionInPolicyAction (Optional)

449 Depending on rules within the aggregating CIM_CompoundPolicyAction instance, the execution
450 sequence of the set of aggregated CIM_PolicyAction instances may be enforced. In that case, the value
451 of the optional ActionOrder property of each instance affects the execution sequence of the aggregated
452 CIM_PolicyAction instance. If the ActionOrder property is not specified, or if it is specified with a value of
453 NULL, the property shall have the value 0.

454 If the order of action is enforced, the execution sequence covers the set of CIM_PolicyAction instances
455 that are associated through CIM_PolicyActionInPolicyAction to the same instance of
456 CIM_CompoundPolicyAction. In this case, a value of 0 shall mean that the aggregated CIM_PolicyAction

457 instances may be executed at any time in the execution sequence. Non-zero values of ActionOrder
458 indicate a relative priority, in which lower numbers shall be executed before higher numbers. Two or more
459 instances of CIM_PolicyAction aggregated with the same non-zero value may be executed in any order,
460 but after all instances associated with lower non-zero values and before all instances with higher non-
461 zero values.

462 **7.8 CIM_PolicyActionInPolicyRule (Optional)**

463 An instance of CIM_PolicyActionInPolicyRule is an optional aggregation that may be used to explicitly
464 specify that an action, represented by an instance of CIM_PolicyAction, shall be executed if the
465 conditions specified for the referenced instance of CIM_PolicyRule are met.

466 Depending on rules within the aggregating CIM_PolicyRule instance, the execution sequence of the set of
467 aggregated CIM_PolicyAction instances may be enforced. In that case, the value of the optional
468 ActionOrder property of each instance affects the execution sequence of the aggregated
469 CIM_PolicyAction instances. If the ActionOrder property is not specified, or if it is specified with a value of
470 NULL, the property shall have the value 0.

471 If the order of action is enforced, the execution sequence covers the set of CIM_PolicyAction instances
472 that are associated by CIM_PolicyActionInPolicyRule to the same instance of CIM_PolicyRule. In this
473 case, a value of 0 shall mean that the aggregated CIM_PolicyAction instances may be executed at any
474 time in the execution sequence. Non-zero values of ActionOrder indicate a relative priority, in which lower
475 numbers shall be executed before higher numbers. Two or more instances of CIM_PolicyAction
476 aggregated with the same non-zero value may be executed in any order, but after all instances
477 associated with lower non-zero values and before all instances with higher non-zero values.

478 **7.9 CIM_PolicyCondition (Optional)**

479 Instances of the abstract class CIM_PolicyCondition are optional. Each instance represents an explicit
480 specification of a condition.

481 CIM_PolicyCondition instances may be aggregated by CIM_PolicyConditionInPolicyRule into one or more
482 instances of CIM_PolicyRule or by CIM_PolicyConditionInPolicyCondition into one or more instances of
483 CIM_CompoundPolicyCondition. These associations, together with the aggregating instances, define an
484 expression made up of a set of condition terms represented by CIM_PolicyCondition instances.

485 If a CIM_PolicyCondition instance may be reused, it shall be aggregated into one
486 CIM_ReusablePolicyContainer instance.

487 **7.10 CIM_PolicyConditionInPolicyCondition (Optional)**

488 The GroupNumber is an optional property used to produce subsets of the set of condition terms. If the
489 GroupNumber property is not specified, or if it is specified with a value of NULL, the property shall have
490 the value 0.

491 ConditionNegated is an optional property used to indicate whether the aggregated CIM_PolicyCondition
492 instance should be negated (TRUE) or not (FALSE). If the ConditionNegated property is not specified, or
493 if it is specified with a value of NULL, the property shall have the value FALSE.

494 **7.11 CIM_PolicyConditionInPolicyRule (Optional)**

495 The CIM_PolicyCondition instances aggregated into an instance of CIM_PolicyRule form a set of
496 condition terms.

497 GroupNumber is an optional property that may be used to produce subsets of the set of condition terms.
498 If the GroupNumber property is not specified, or if it is specified with a value of NULL, the property shall
499 have the value 0.

Policy Profile

500 ConditionNegated is an optional property used to indicate whether the aggregated CIM_PolicyCondition
501 instance shall be negated (TRUE) or not (FALSE). If the ConditionNegated property is not specified, or if
502 it is specified with a value of NULL, the property shall have the value FALSE.

503 7.12 CIM_PolicyRoleCollection (Optional)

504 Instances of CIM_PolicyRoleCollection are optional collections of CIM_PolicyRule instances that
505 collectively meet a particular set of policy roles within a system.

506 These policy roles shall be represented using the Role Property. The value shall have the form:
507 <RoleName>["&&"<RoleName>]*, where the individual role names appear in alphabetical order
508 (according to the collating sequence for UCS-2). Implementations may treat Role property values that are
509 specified as "role combinations" as simple strings.

510 Each instance of CIM_PolicyRoleCollection shall be associated with exactly one CIM_System instance
511 through an instance of CIM_PolicyRoleCollectionInSystem.

512 Each CIM_PolicyRule instance required to meet a particular policy role shall be aggregated into an
513 instance of CIM_PolicyRoleCollection by an instance of CIM_PolicySetInRoleCollection.

514 7.13 CIM_PolicyRoleCollectionInSystem (Conditional)

515 An instance of CIM_PolicyRoleCollectionInSystem is a conditional association that shall be used to
516 establish a relationship between an instance of CIM_PolicyRoleCollection and a Scoping Instance, such
517 as an AdminDomain or ComputerSystem. When the optional behavior specified in section 7.13 is
518 supported, the instance of this class is used to associate the in an instance of CIM_PolicyRoleCollection
519 to a Scoping instance.

520 7.14 CIM_PolicyRule

521 CIM_PolicyRule is the central class of this profile and at least one instance is mandatory.

522 CIM_PolicyRule instances represent 'If <condition expression> then {<action sequence>}' semantics.

523 The condition expression and action sequence of a CIM_PolicyRule may be specified implicitly, explicitly,
524 or both.

525 Each instance of CIM_PolicySetValidityPeriod creates an implicit condition on the referenced
526 CIM_PolicyRule. Evaluation of that rule is conditional on the referenced CIM_PolicyTimePeriodCondition.

527 7.14.1 Condition Expressions

528 The set of individual terms of an explicit condition expression are represented by CIM_PolicyCondition
529 instances that are aggregated by CIM_PolicyConditionInPolicyRule instances.

530 The ConditionListType property of a CIM_PolicyRule instance together with the GroupNumber and
531 ConditionNegated properties of each CIM_PolicyConditionInPolicyRule aggregation instance collectively
532 specify an explicit condition expression.

533 The set of terms is divided into one or more subsets. Each subset is defined by a different value for the
534 GroupNumber property.

535

536 7.14.2 Evaluation Schedule

537 A CIM_PolicyRule may also be associated with a set of CIM_PolicyTimePeriodCondition instances that
538 are each aggregated by an instance of CIM_PolicySetValidityPeriod. Collectively, this set specifies the
539 schedule according to which the CIM_PolicyRule is active and inactive.

540 7.14.3 Rule Composition

541 An instance of CIM_PolicyRule may use a rule set defined by instances of the CIM_PolicySetComponent
542 association to associate CIM_PolicyRule instances. Such a rule is known as a composite rule.

543 The implicit and explicit conditions of the aggregating rule apply to each of the subordinate rules.

544 Any side effects of condition evaluation or the execution of actions shall not affect the result of the
545 evaluation of other conditions evaluated. That is, the conditions in the composite rule may be evaluated in
546 any order before applying the priority and determining which actions are to be executed.

547 If the conditions of the composite rule are met, its action sequence shall be executed after all applicable
548 actions of subordinate rules are executed.

549 The Priority property of CIM_PolicySetComponent defines the order of execution of CIM_PolicyRule
550 instances in a rule set. The value of Priority shall be a unique, non-negative integer value, relative to all
551 Priority values in the rule set. The actions of an aggregated CIM_PolicyRule instance with a numerically
552 higher value of Priority shall be executed before the actions of an aggregated instance with a lower
553 Priority value.

554 PolicyDecisionStrategy is a conditional property that shall be used in a composite rule to define the
555 evaluation method used for policies contained in its rule set. The PolicyDecisionStrategy property is
556 conditional on instance of CIM_PolicyRule being referenced by an instance of CIM_PolicySetComponent.

557 7.15 CIM_PolicyRuleInSystem

558 CIM_PolicyRuleInSystem instances are a mandatory scoping association that links a CIM_PolicyRule
559 instance to the CIM_System instance in whose scope the rule is defined.

560 7.16 CIM_PolicySetAppliesToElement (Optional)

561 An instance of CIM_PolicySetAppliedToElement may be used to define what managed elements can be
562 affected by the successful execution of the policy. A specialization of this profile may use other
563 mechanism, like CQL or CPL, to define the managed elements that can be affected by the policy. If a
564 specialization of this profile relies on this association, then that profile shall define how the association is
565 used to define the set of managed element affected by policy, accounting for the interaction of that
566 definition with other set definition mechanisms like CPL if used.

567 7.17 CIM_PolicySetComponent (Optional)

568 A CIM_PolicySetComponent instance is an optional aggregation used to create a composite rule. The set
569 of aggregated CIM_PolicyRule instances forms a rule set that is evaluated in the order specified by the
570 mandatory Priority property.

571 The Priority property of CIM_PolicySetComponent is a mandatory property defines the order of execution
572 of CIM_PolicyRule instances in a rule set.

573 7.18 CIM_PolicySetInRoleCollection (Optional)

574 An instance of CIM_PolicySetInRoleCollection is an optional aggregation used to define a set of
575 CIM_PolicyRule instances that are necessary to satisfy a policy role defined by the referenced
576 CIM_PolicyRoleCollection instance.

577 7.19 CIM_PolicySetValidityPeriod (Optional)

578 An instance of the optional CIM_PolicySetValidityPeriod aggregation associates an instance of
579 CIM_PolicyTimePeriodCondition with an instance of CIM_PolicySet.

Policy Profile

580 A Time Period may be aggregated by multiple CIM_PolicySets. A set that does not point to a
581 CIM_PolicyTimePeriodCondition through this association, from the scheduling perspective, is always in a
582 valid time period.

583 7.20 CIM_PolicyTimePeriodCondition (Optional)

584 Each instance of this optional class provides a means of representing the time periods.

585 One use is to govern when an instance of CIM_PolicyRule is active when aggregated through
586 CIM_PolicySetValidityPeriod. At all times that fall outside these time periods, the aggregating
587 CIM_PolicyRule has no effect. An instance of CIM_PolicyRule is active at all times if it does not
588 aggregate any instances of CIM_PolicyTimePeriodCondition.

589 A second use of CIM_PolicyTimePeriodCondition is as an explicit term in a condition expression of an
590 instance of CIM_PolicyRule or CIM_CompoundPolicyCondition. Using CIM_PolicyTimePeriodCondition in
591 this way enables the inclusion of time-based criteria in the condition expressions.

592 The TimePeriod property shall match the pattern
593 `"^[0123456789]{8}T[0123456789]{6}/[0123456789]{8}T[0123456789]{6}$"`.

594 The value of the optional TimePeriod property is formatted as a string that represents a start date and
595 time, in which the character "T" indicates the beginning of the time portion, followed by the slash character
596 (/), followed by a similar string that represents an end date and time. The first date indicates the beginning
597 of the range; the second date indicates the end. The second date and time shall be later than the first.
598 Date/times are expressed as substrings of the form `yyyymmddThhmmss`. For example,
599 `20000101T080000/20000131T120000` defines January 1, 2000, 0800 through January 31, 2000, noon.

600 In the following special cases, one of the date/time strings may be replaced with a special string defined
601 in RFC 2445:

- 602 • If the first date/time is replaced with the string 'THISANDPRIOR', the property indicates that a
603 PolicySet is valid [from now] until the date/time that appears after the slash character (/).
- 604 • If the second date/time is replaced with the string 'THISANDFUTURE', the property indicates
605 that a PolicySet becomes valid on the date/time that appears before the slash character (/) and
606 remains valid from that point on.

607 When the TimePeriod property is NULL, the CIM_PolicyTimePeriodCondition shall evaluate to TRUE.

608 The value of the optional MonthOfYearMask property refines the valid time period that is defined by the
609 TimePeriod property by explicitly specifying the months during which the condition may evaluate to
610 TRUE. This property is formatted as an octet string, structured as follows:

- 611 • A 4-octet length field, indicating the length of the entire octet string. This field is always set to
612 `0x00000006` for this property.
- 613 • A 2-octet field consisting of 12 bits identifying the 12 months of the year, beginning with January
614 and ending with December, followed by 4 bits that are always set to 0. For each month, the
615 value 1 indicates that the policy is valid for that month, and the value 0 indicates that it is not
616 valid.

617 The MonthOfYearMask value `0x000000060830`, for example, indicates that the condition evaluates to
618 TRUE only in the months May, November, and December.

619 If MonthOfYearMask is not specified, or the value is set to NULL, all months of the year are specified for
620 the purpose of evaluating the condition (effectively a value of `0x00000006FFF0`).

621 The value of the optional DayOfMonthMask refines the valid time period that is defined by the TimePeriod
 622 property by explicitly specifying the days of the month during which the condition may evaluate to TRUE.
 623 This property is formatted as an octet string, structured as follows:

- 624 • A 4-octet length field, indicating the length of the entire octet string. This field is always set to
 625 0x0000000C for this property.
- 626 • An 8-octet field consisting of 31 bits identifying the days of the month counting from the
 627 beginning, followed by 31 more bits identifying the days of the month counting from the end,
 628 followed by 2 bits that are always set to 0. For each day, the value 1 indicates that the PolicySet
 629 is valid for that day, and the value 0 indicates that it is not valid.

630 The DayOfMonthMask value 0x0000000C8000000100000000, for example, indicates that a PolicySet is
 631 valid on the first and last days of the month.

632 For months with fewer than 31 days, the digits corresponding to days that the months do not have
 633 (counting in both directions) are ignored.

634 If a DayOfMonthMask value for this property is not provided, or the value is set to NULL, all days of the
 635 month are treated as valid for the purpose of evaluating this condition (effectively a value of
 636 0x0000000CFFFFFFFFFFFFFFFFFC).

637 The value of the optional DayOfWeekMask refines the valid time period that is defined by the TimePeriod
 638 property by explicitly specifying the days of the week during which the condition may evaluate to TRUE.
 639 This property is formatted as an octet string, structured as follows:

- 640 • A 4-octet length field, indicating the length of the entire octet string. This field is always set to
 641 0x00000005 for this property.
- 642 • A 1-octet field consisting of 7 bits identifying the 7 days of the week, beginning with Sunday and
 643 ending with Saturday, followed by 1 bit that is always set to 0. For each day of the week, the
 644 value 1 indicates that the PolicySet is valid for that day, and the value 0 indicates that it is not
 645 valid.

646 The DayOfWeekMask value 0x000000057C, for example, indicates that a PolicySet is valid Monday
 647 through Friday.

648 If a DayOfWeekMask value for this property is not provided, or the value is set to NULL, all days of the
 649 week are treated as valid for the purpose of evaluating this condition (effectively a value of
 650 0x00000005FE).

651 The TimeOfDayMask property shall match the pattern “^T[0123456789]{6}/T[0123456789]{6}\$”.

652 The value of the optional TimeOfDayMask property refines the valid time period that is defined by the
 653 TimePeriod property by explicitly specifying a range of times in a day during which the condition may
 654 evaluate to TRUE. This property is formatted in the style of RFC 2445: a time string beginning with the
 655 character 'T', followed by the slash character (/), followed by a second time string. The first time indicates
 656 the beginning of the range; the second time indicates the end. Times are expressed as substrings of the
 657 form 'Thhmmss'.

658 The second substring always identifies a later time than the first substring. To allow for ranges that span
 659 midnight, however, the value of the second substring may be smaller than the value of the first substring.
 660 Thus, 'T080000/T210000' identifies the range from 0800 to 2100, while 'T210000/T080000' identifies the
 661 range from 2100 to 0800 the following day.

662 When a range spans midnight, it includes parts of two successive days. When one of these days is also
 663 selected by the MonthOfYearMask, DayOfMonthMask, or DayOfWeekMask property, but the other day is
 664 not, then the condition evaluates to TRUE only during the portion of the range that falls on the selected
 665 day. For example, if the range extends from 2100 to 0800, and the DayOfWeekMask property selects
 666 Monday and Tuesday, the PolicySet is active during the following three intervals:

Policy Profile

- 667 • From midnight Sunday until 0800 Monday
- 668 • From 2100 Monday until 0800 Tuesday
- 669 • From 2100 Tuesday until 23:59:59 Tuesday

670 If a TimeOfDayMask value is not provided or the value is set to NULL, the condition may evaluate to
671 TRUE for all hours of the day (effectively a value of 'T000000/T240000').

672 The value of the optional LocalOrUtcTime property indicates whether the times represented in the
673 TimePeriod property and in the various Mask properties represent local times or UTC times. There is no
674 provision for mixing local times and UTC times; the value of this property applies to all of the other time-
675 related properties. Time periods are synchronized worldwide by using the enumeration value 'UTCTime'.
676 If the goal is to synchronize worldwide on a particular local time (such as 0300 - 0500 in New York), and if
677 the TimePeriod property spans a Daylight Saving Time transition in New York, it will be necessary to
678 create multiple instances of CIM_PolicyTimePeriodCondition, one based on the offset UTC-0500 for the
679 part of each year when standard time is used in New York, and one based on the offset UTC-0400 for the
680 part of each year when Daylight Saving Time is used there.

681 **7.21 CIM_ReusablePolicy (Optional)**

682 Instances of the optional CIM_ReusablePolicy association indicate that the referenced instance of
683 CIM_PolicyRule, CIM_PolicyAction, or CIM_PolicyCondition is a member of an instance of
684 CIM_ReusablePolicyContainer.

685 **7.22 CIM_ReusablePolicyContainer (Optional)**

686 This optional class represents an administratively defined container for reusable instances of
687 CIM_PolicyRule, CIM_PolicyAction, or CIM_PolicyCondition. This class does not introduce any additional
688 properties beyond those in its superclass AdminDomain.

689 Even if an instance of CIM_PolicyRule and CIM_PolicyCondition is not associated to an instance of
690 CIM_ReusablePolicyContainer through CIM_ReusablePolicy, the instance of CIM_PolicyRule or
691 CIM_PolicyCondition may be aggregated into one or more instances of CIM_PolicyRule.

692 Each instance of this class shall use the NameFormat value "ReusablePolicyContainer".

693 **8 Methods**

694 This section details the requirements for supporting intrinsic operations and extrinsic methods for the CIM
695 elements defined by this profile.

696 **8.1 CIM_PolicyRoleCollection. ActivatePolicySet()**

697 The mandatory method CIM_PolicyRoleCollection.ActivatePolicySet() takes as input a reference to a
698 CIM_ManagedElement. The CIM_ManagedElement shall be a member of the CIM_PolicyRoleCollection,
699 associated through an instance of ElementInPolicyRoleCollection. The result of this method, if it is
700 successfully executed, is that the aggregated CIM_PolicySets are deployed and enforced for the
701 referenced element. This is reflected by the instantiation of the CIM_PolicySetAppliesToElement
702 association between the referenced element and each instance of CIM_PolicySet.

703

704 **8.2 CIM_PolicyRoleCollection. DeactivatePolicySet()**

705 The mandatory method CIM_PolicyRoleCollection.DeactivatePolicySet() takes as input a reference to a
706 CIM_ManagedElement. The CIM_ManagedElement shall be a member of the CIM_PolicyRoleCollection,
707 associated through an instance of ElementInPolicyRoleCollection. The result of this method, if it is

708 successfully executed, is that the aggregated CIM_PolicySets are not enforced for the referenced
709 element. This is reflected by the removal of the CIM_PolicySetAppliesToElement association instance, if
710 one exists, between the referenced element and each collected CIM_PolicySet.

711 **8.3 Profile Conventions for Operations**

712 Support for operations for each profile class (including associations) is specified in the following
713 subclauses. Each subclause includes either the statement “All operations are supported as described by
714 [DSP0200 version 1.2](#)” or a table listing all the operations that are not supported by this profile or where
715 the profile requires behavior other than that described by [DSP0200 version 1.2](#).

716 The default list of operations is as follows:

- 717 • GetInstance
- 718 • EnumerateInstances
- 719 • EnumerateInstanceNames
- 720 • Associators
- 721 • AssociatorNames
- 722 • References
- 723 • ReferenceNames

724 A compliant implementation shall support all the operations in the default list for each class, unless the
725 “Requirement” column states something other than *Mandatory*.

Policy Profile

726 8.4 CIM_QueryCondition

727 All operations in the default list in section 8.3 are supported as described by DSP0200 version 1.2.

728 8.5 CIM_MethodAction

729 All operations in the default list in section 8.3 are supported as described by DSP0200 version 1.2.

730 8.6 CIM_PolicyRule

731 All operations in the default list in section 8.3 are supported as described by DSP0200 version 1.2.

732 8.7 CIM_PolicyCondition

733 All operations in the default list in section 8.3 are supported as described by DSP0200 version 1.2.

734 8.8 CIM_PolicyAction

735 All operations in the default list in section 8.3 are supported as described by DSP0200 version 1.2.

736 8.9 CIM_PolicySetAppliesToElement

737 Table 2 lists operations that either have special requirements beyond those from [DSP0200 version 1.2](#) or
738 shall not be supported.

739 **Table 2 – Operations: CIM_PolicySetAppliesToElement**

Operation	Requirement	Messages
EnumerateInstances	Unspecified	None
EnumerateInstanceNames	Unspecified	None
Associators	Unspecified	None
AssociatorNames	Unspecified	None
References	Unspecified	None
ReferenceNames	Unspecified	None

740 8.10 CIM_PolicyConditionInPolicyRule

741 Table 3 lists operations that either have special requirements beyond those from [DSP0200 version 1.2](#) or
742 shall not be supported.

743 **Table 3 – Operations: CIM_PolicyConditionInPolicyRule**

Operation	Requirement	Messages
EnumerateInstances	Unspecified	None
EnumerateInstanceNames	Unspecified	None
Associators	Unspecified	None
AssociatorNames	Unspecified	None
References	Unspecified	None
ReferenceNames	Unspecified	None

744 **8.11 CIM_PolicyActionInPolicyRule**

745 Table 4 lists operations that either have special requirements beyond those from [DSP0200 version 1.2](#) or
746 shall not be supported.

747 **Table 4 – Operations: CIM_PolicyActionInPolicyRule**

Operation	Requirement	Messages
EnumerateInstances	Unspecified	None
EnumerateInstanceNames	Unspecified	None
Associators	Unspecified	None
AssociatorNames	Unspecified	None
References	Unspecified	None
ReferenceNames	Unspecified	None

748 **8.12 CIM_CompoundPolicyAction**

749 All operations in the default list in section 8.3 are supported as described by DSP0200 version 1.2.

750 **8.13 CIM_CompoundPolicyCondition**

751 All operations in the default list in section 8.3 are supported as described by DSP0200 version 1.2.

752 **8.14 CIM_ElementInPolicyRoleCollection**

753 Table 5 lists operations that either have special requirements beyond those from [DSP0200 version 1.2](#) or
754 shall not be supported.

755 **Table 5 – Operations: CIM_ElementInPolicyRoleCollection**

Operation	Requirement	Messages
EnumerateInstances	Unspecified	None
EnumerateInstanceNames	Unspecified	None
Associators	Unspecified	None
AssociatorNames	Unspecified	None
References	Unspecified	None
ReferenceNames	Unspecified	None

756

757 **8.15 CIM_PolicyActionInPolicyAction**

758 Table 6 lists operations that either have special requirements beyond those from [DSP0200 version 1.2](#) or
759 shall not be supported.

760 **Table 6 – Operations: CIM_PolicyActionInPolicyAction**

Operation	Requirement	Messages
EnumerateInstances	Unspecified	None
EnumerateInstanceNames	Unspecified	None
Associators	Unspecified	None

Policy Profile

AssociatorNames	Unspecified	None
References	Unspecified	None
ReferenceNames	Unspecified	None

761 8.16 CIM_PolicyConditionInPolicyCondition

762 Table 7 lists operations that either have special requirements beyond those from [DSP0200 version 1.2](#) or
763 shall not be supported.

764 **Table 7 – Operations: CIM_PolicyConditionInPolicyCondition**

Operation	Requirement	Messages
EnumerateInstances	Unspecified	None
EnumerateInstanceNames	Unspecified	None
Associators	Unspecified	None
AssociatorNames	Unspecified	None
References	Unspecified	None
ReferenceNames	Unspecified	None

765 8.17 CIM_PolicyRoleCollection

766 All operations in the default list in section 8.3 are supported as described by DSP0200 version 1.2.

767

768 8.18 CIM_PolicyRoleCollectionInSystem

769 Table 8 lists operations that either have special requirements beyond those from [DSP0200 version 1.2](#) or
770 shall not be supported.

771 **Table 8 – Operations: CIM_PolicyRoleCollectionInSystem**

Operation	Requirement	Messages
EnumerateInstances	Unspecified	None
EnumerateInstanceNames	Unspecified	None
Associators	Unspecified	None
AssociatorNames	Unspecified	None
References	Unspecified	None
ReferenceNames	Unspecified	None

772

773 **8.19 CIM_PolicyRuleInSystem**

774 Table 9 lists operations that either have special requirements beyond those from [DSP0200 version 1.2](#) or
775 shall not be supported.

776 **Table 9 – Operations: CIM_PolicyRuleInSystem**

Operation	Requirement	Messages
EnumerateInstances	Unspecified	None
EnumerateInstanceNames	Unspecified	None
Associators	Unspecified	None
AssociatorNames	Unspecified	None
References	Unspecified	None
ReferenceNames	Unspecified	None

777 **8.20 CIM_PolicySetComponent**

778 Table 10 lists operations that either have special requirements beyond those from [DSP0200 version 1.2](#)
779 or shall not be supported.

780 **Table 10 – Operations: CIM_PolicySetComponent**

Operation	Requirement	Messages
EnumerateInstances	Unspecified	None
EnumerateInstanceNames	Unspecified	None
Associators	Unspecified	None
AssociatorNames	Unspecified	None
References	Unspecified	None
ReferenceNames	Unspecified	None

781 **8.21 CIM_PolicySetInRoleCollection**

782 Table 11 lists operations that either have special requirements beyond those from [DSP0200 version 1.2](#)
783 or shall not be supported.

784 **Table 11 – Operations: CIM_PolicySetInRoleCollection**

Operation	Requirement	Messages
EnumerateInstances	Unspecified	None
EnumerateInstanceNames	Unspecified	None
Associators	Unspecified	None
AssociatorNames	Unspecified	None
References	Unspecified	None
ReferenceNames	Unspecified	None

Policy Profile

785 8.22 CIM_PolicySetValidityPeriod

786 Table 12 lists operations that either have special requirements beyond those from [DSP0200 version 1.2](#) or
787 shall not be supported.

788 **Table 12 – Operations: CIM_PolicySetValidityPeriod**

Operation	Requirement	Messages
EnumerateInstances	Unspecified	None
EnumerateInstanceNames	Unspecified	None
Associators	Unspecified	None
AssociatorNames	Unspecified	None
References	Unspecified	None
ReferenceNames	Unspecified	None

789 8.23 CIM_PolicyTimePeriodCondition

790 All operations in the default list in section 8.3 are supported as described by DSP0200 version 1.2.

791

792 8.24 CIM_ReusablePolicy

793 Table 13 lists operations that either have special requirements beyond those from [DSP0200 version 1.2](#)
794 or shall not be supported.

795 **Table 13 – Operations: CIM_ReusablePolicy**

Operation	Requirement	Messages
EnumerateInstances	Unspecified	None
EnumerateInstanceNames	Unspecified	None
Associators	Unspecified	None
AssociatorNames	Unspecified	None
References	Unspecified	None
ReferenceNames	Unspecified	None

796 8.25 CIM_ReusablePolicyContainer

797 All operations in the default list in section 8.3 are supported as described by DSP0200 version 1.2.

798

799 9 Use Cases

800 This section contains object diagrams and use cases for the *Policy Profile*.

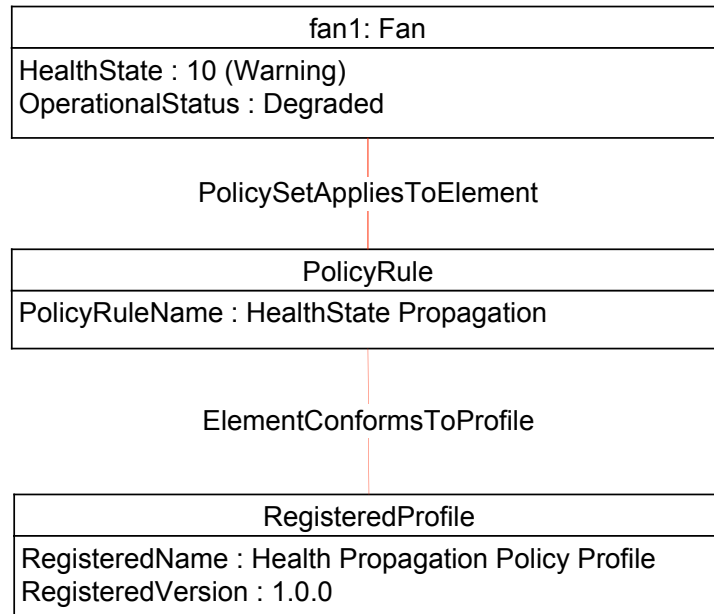
801 9.1 Object Diagrams

802 Figure 2 and Figure 3 represent possible policy definitions in a specialized policy profile. The two
803 approaches represented are the Blackbox approach in which the specialized profile defines a policy

804 algorithm, policy name, and policy registered profile. Figure 3 represents taking the definition a step
 805 further and defines the actual CQL or CIM-SPL statements that represent the policy algorithm.

806 **9.2 Blackbox Policy Object Diagram**

807 Figure 2 is an example of a Blackbox definition of CIM_PolicyRule in which the rule represents a policy
 808 algorithm that has been defined in a specialized policy profile but does not have specific CQL or CIM-SPL
 809 defined.



810

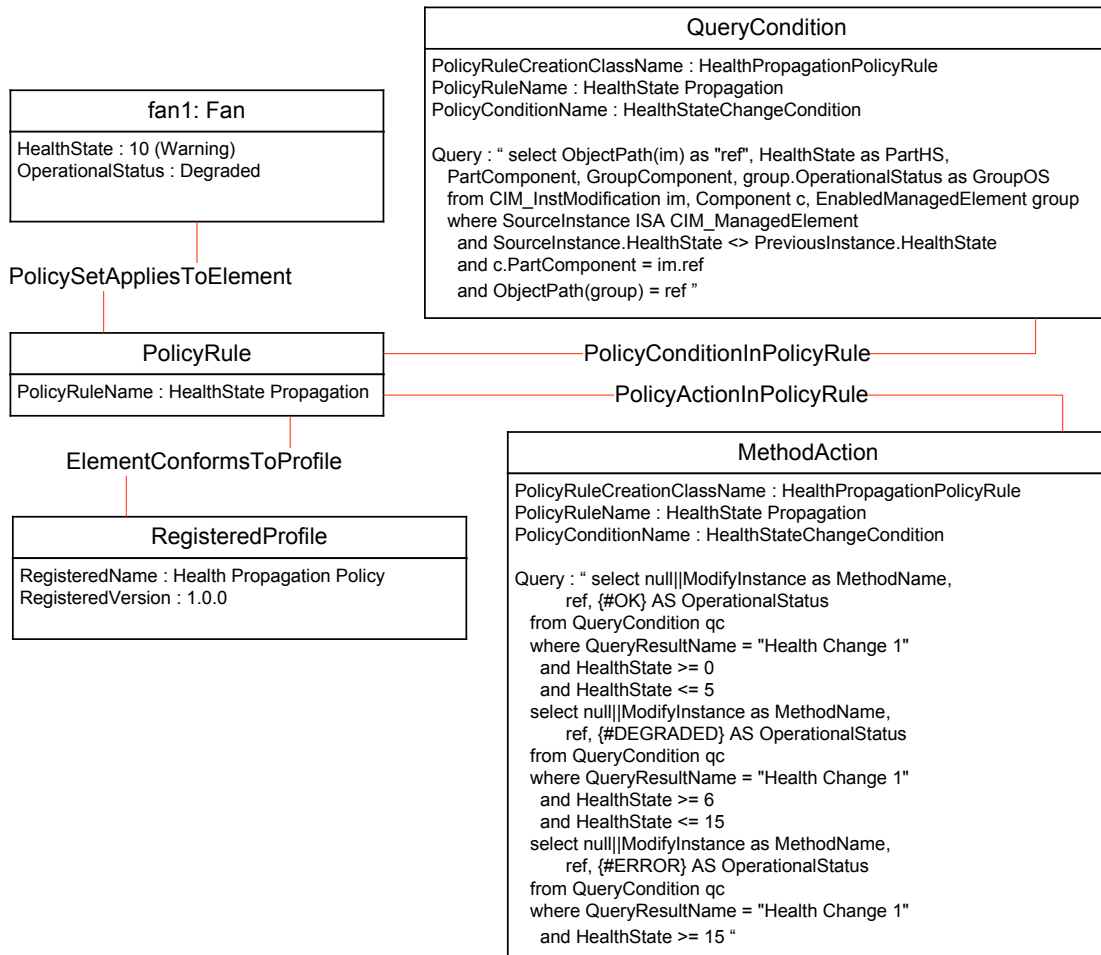
811

Figure 2 – Blackbox Health Propagation Policy Diagram

Policy Profile

812 9.3 Propagate HealthState to OperationalStatus

813 Figure 3 is an example of the CIM_PolicyRule, CIM_PolicyCondition, CIM_PolicyAction, and
 814 CIM_RegisteredProfile classes instantiated according to a specialized whitebox policy profile that defines
 815 policy for Health State to OperationalStatus propagation within a class.



816

817 **Figure 3 – Health Propagation Policy Object Diagram**

818 10 CIM Elements

819 Table 14 shows the requirements for the CIM Elements in this profile. Instances of the following CIM
 820 Elements shall be implemented as described in Table 14. Sections 7 (“Implementation”) and 8
 821 (“Methods”) may impose additional requirements on these elements.

822 **Table 14 – CIM Elements: Policy Profile**

Element Name	Requirement	Description
Classes		
CIM_QueryCondition	Optional	See section 7.1 and 10.1
CIM_MethodAction	Optional	See section 7.2 and 10.2

Element Name	Requirement	Description
CIM_PolicyRule	Mandatory	See section 7.14 and 10.3.
CIM_PolicyCondition	Optional	See section 7.9 and 10.4.
CIM_PolicyAction	Optional	See section 7.6 and 10.5.
CIM_PolicySetAppliesToElement	Optional	See section 7.16 and 10.6
CIM_PolicyConditionInPolicyRule	Optional	See section 7.11 and 10.7
CIM_PolicyActionInPolicyRule	Optional	See section 7.8 and 10.8
CIM_CompoundPolicyAction	Optional	See section 7.1 and 10.9
CIM_CompoundPolicyCondition	Optional	See section 7.4 and 10.10
CIM_ElementInPolicyRoleCollection	Optional	See section 7.5 and 10.11
CIM_PolicyActionInPolicyAction	Optional	See section 7.7 and 10.12
CIM_PolicyConditionInPolicyCondition	Optional	See section 7.10 and 10.13
CIM_PolicyRoleCollection	Optional	See section 7.12 and 10.14
CIM_PolicyRoleCollectionInSystem	Conditional	See section 7.13 and 10.15
CIM_PolicyRuleInSystem	Mandatory	See section 7.15 and 10.16
CIM_PolicySetComponent	Optional	See section 7.17 and 10.17
CIM_PolicySetInRoleCollection	Optional	See section 7.18 and 10.18
CIM_PolicySetValidityPeriod	Optional	See section 7.19 and 10.19
CIM_PolicyTimePeriodCondition	Optional	See section 7.20 and 10.20
CIM_ReusablePolicy	Optional	See section 7.21 and 10.21
CIM_ReusablePolicyContainer	Optional	See section 7.22 and 10.22
Indications		
No Indications defined in this version		

Policy Profile

823 10.1 CIM_QueryCondition

824 CIM_QueryCondition defines the criteria for generating a set of query results that are accessible to other
825 QueryConditions or MethodActions of the same PolicyRule. Table 15 contains the requirements for
826 elements of this class.

827 **Table 15 – Class: CIM_QueryCondition**

Properties	Requirement	Notes
SystemCreationClassName	Mandatory	Key
SystemName	Mandatory	Key
CreationClassName	Mandatory	Key
PolicyRuleName	Mandatory	Key
PolicyRuleCreationClassName	Mandatory	Key
PolicyConditionName	Mandatory	Key
QueryResultName	Mandatory	This property shall be treated as a class name in a query statement.
Query	Mandatory	This property shall be a query expression that may be evaluated and that defines the query results that may be generated.
QueryLanguage	Mandatory	This property shall be the language defined by DSP0200. The language shall be the one in which the query string is expressed.
Trigger		This property shall be a Boolean condition and there shall be no more than one QueryCondition with this property = true associated with a particular Policy.

828 10.2 CIM_MethodAction

829 CIM_MethodAction is a CIM_PolicyAction that MAY invoke methods as defined by a query. Table 16
830 contains the requirements for elements of this class.

831 **Table 16 – Class: CIM_MethodAction**

Properties	Requirement	Notes
SystemCreationClassName	Mandatory	Key
SystemName	Mandatory	Key
CreationClassName	Mandatory	Key
PolicyRuleName	Mandatory	Key
PolicyRuleCreationClassName	Mandatory	Key
PolicyActionName	Mandatory	Key
InstMethodCallName	Mandatory	This property shall be treated as a class name in a query statement.
Query	Mandatory	This property shall be a query expression that defines the method to invoke and its input parameters.

Properties	Requirement	Notes
QueryLanguage	Mandatory	This property shall be the language defined by DSP0200. The language shall be the one in which the query string is expressed.

832

833 10.3 CIM_PolicyRule

834 CIM_PolicyRule represents the policy rule applied to the associated CIM_ManagedElement class. Table
835 17 contains the requirements for elements of this class.

836

Table 17 – Class: CIM_PolicyRule

Properties	Requirement	Notes
SystemCreationClassName	Mandatory	Key
SystemName	Mandatory	Key
CreationClassName	Mandatory	Key
PolicyRuleName	Mandatory	Key
PolicyDecisionStrategy	Conditional	See section 7.14.3
ElementName	Mandatory	This property shall be formatted as a free-form string of variable length (pattern “.*”).

837 10.4 CIM_PolicyCondition

838 CIM_PolicyCondition represents a specific condition defined in CQL or CIM-SPL for triggering a related
839 CIM_PolicyAction. Table 18 contains the requirements for elements of this class.

840

Table 18 – Class: CIM_PolicyCondition

Properties	Requirement	Notes
SystemCreationClassName	Mandatory	Key
CreationClassName	Mandatory	Key
SystemName	Mandatory	Key
PolicyRuleCreationClassName	Mandatory	Key
PolicyRuleName	Mandatory	Key
PolicyConditionName	Mandatory	Key
ElementName	Mandatory	This property shall be formatted as a free-form string of variable length (pattern “.*”).

Policy Profile

841 10.5 CIM_PolicyAction

842 CIM_PolicyAction represents a specific action defined in CQL or CIM-SPL to be invoked when a specific
843 policy condition is triggered. Table 19 contains the requirements for elements of this class.

844 **Table 19 – Class: CIM_PolicyAction**

Properties	Requirement	Notes
SystemCreationClassName	Mandatory	Key
CreationClassName	Mandatory	Key
SystemName	Mandatory	Key
PolicyRuleCreationClassName	Mandatory	Key
PolicyRuleName	Mandatory	Key
PolicyActionName	Mandatory	Key
ElementName	Mandatory	This property shall be formatted as a free-form string of variable length (pattern ".*").

845 10.6 CIM_PolicySetAppliesToElement

846

847 CIM_PolicySetAppliesToElement associates the CIM_PolicySet instance with the CIM_ManagedElement
848 instance whose state is evaluated by policy conditions and may be affected by the successful execution
849 of policy actions. The managed element may be an aggregation point for several other managed element.
850 In this role, the existence of this association to this aggregation point represents the set of instances
851 affected and evaluated by the policy.

852 Table 20 contains the requirements for elements of this class.

853 **Table 20 – Class: CIM_PolicySetAppliesToElement**

Elements	Requirement	Notes
PolicySet	Mandatory	This property shall be a reference to the instance of CIM_PolicySet. Cardinality *
ManagedElement	Mandatory	This property shall be a reference to the instance of CIM_ManagedElement. Cardinality *

854

855 10.7 CIM_PolicyConditionInPolicyRule

856

857 CIM_PolicyConditionInPolicyRule is an optional aggregation that may be used to compound
858 CIM_PolicyCondition instances into an instance of CIM_PolicyRule.

859 Table 21 contains the requirements for elements of this class.

860

861

Table 21 – Class: CIM_PolicyConditionInPolicyRule

Elements	Requirement	Notes
GroupComponent	Mandatory	This property shall be a reference to the instance of CIM_PolicySetRule.
PartComponent	Mandatory	This property shall be a reference to the instance of CIM_PolicyCondition.
GroupNumber	Optional	This property is an optional property used to produce subsets of the set of condition terms.
ConditionNegated	Optional	See section 7.11

862 10.8 CIM_PolicyActionInPolicyRule

863 CIM_PolicyActionInPolicyRule is an optional aggregation that may be used to explicitly specify that an
 864 action, represented by an instance of CIM_PolicyAction, shall be executed if the conditions specified for
 865 the referenced instance of CIM_PolicyRule are met.

866 Table 22 contains the requirements for elements of this class.

867

868

Table 22 – Class: CIM_PolicyActionInPolicyRule

Elements	Requirement	Notes
GroupComponent	Mandatory	This property shall be a reference to the instance of CIM_PolicyRule.
ManagedElement	Mandatory	This property shall be a reference to the instance of CIM_PolicyAction.
ActionOrder	Optional	This property is an unsigned integer 'n' that indicates the relative position of a PolicyAction in the sequence of actions associated with a PolicyRule or CompoundPolicyAction.

869 10.9 CIM_CompoundPolicyAction

870 CIM_CompoundPolicyAction is an optional class that may be used to represent an expression consisting
 871 of an ordered sequence of action terms. Each action term is represented as a subclass of the
 872 PolicyAction class. Compound actions are constructed by associating dependent action terms together
 873 using the PolicyActionInPolicyAction aggregation.

874 Table 23 contains the requirements for elements of this class.

875

Policy Profile

876

Table 23 – Class: CIM_CompoundPolicyAction

Elements	Requirement	Notes
SequencedActions	Optional	See Section 7.3.1
ExecutionStrategy	Optional	See Section 7.3
SystemCreationClassName	Mandatory	Key
SystemName	Mandatory	Key
PolicyRuleCreationClassName	Mandatory	Key
PolicyRuleName	Mandatory	Key
CreationClassName	Mandatory	Key
PolicyActionName	Mandatory	Key

877

878 **10.10 CIM_CompoundPolicyCondition**

879 CIM_CompoundPolicyCondition is an optional class that may be used to represent compound conditions
880 formed by aggregating simpler policy conditions. Compound conditions are constructed by associating
881 subordinate condition terms together using the PolicyConditionInPolicyCondition aggregation.

882 Table 24 contains the requirements for elements of this class.

883

884

Table 24 – Class: CIM_CompoundPolicyCondition

Elements	Requirement	Notes
SystemCreationClassName	Mandatory	Key
SystemName	Mandatory	Key
PolicyRuleCreationClassName	Mandatory	Key
PolicyRuleName	Mandatory	Key
CreationClassName	Mandatory	Key
PolicyConditionName	Mandatory	Key
ElementName	Mandatory	This property shall be formatted as a free-form string of variable length (pattern “.*”).

885 **10.11 CIM_ElementInPolicyRoleCollection**

886 CIM_ElementInPolicyRoleCollection is an optional association that may be used to aggregate zero or
887 more Managed Element subclass instances into a PolicyRoleCollection object, representing a role played
888 by these Managed Elements. This Collection indicates that the aggregated PolicySets (aggregated by
889 CIM_PolicySetInRoleCollection) MAY BE applied to the referenced elements.

890 Table 25 contains the requirements for elements of this class.

891

892

Table 25 – Class: CIM_ElementInPolicyRoleCollection

Elements	Requirement	Notes
Collection	Mandatory	Key
Member	Mandatory	Key

893

894 10.12 CIM_PolicyActionInPolicyAction

895 CIM_PolicyActionInPolicyAction is an optional association that may be used to represent the
896 compounding of policy actions into a higher-level policy action.

897 Table 26 contains the requirements for elements of this class.

898

899

Table 26 – Class: CIM_PolicyActionInPolicyAction

Elements	Requirement	Notes
GroupComponent	Mandatory	Key
PartComponent	Mandatory	Key
ActionOrder	Optional	This property is an unsigned integer ' n ' that indicates the relative position of a PolicyAction in the sequence of actions associated with a PolicyRule or CompoundPolicyAction.

900

901 10.13 CIM_PolicyConditionInPolicyCondition

902 CIM_PolicyConditionInPolicyCondition is an optional association that may be used to aggregate zero or
903 more instances of the PolicyCondition class to a CompoundPolicyCondition.

904 Table 27 contains the requirements for elements of this class.

905

906

Table 27 – Class: CIM_PolicyConditionInPolicyCondition

Elements	Requirement	Notes
GroupComponent	Mandatory	Key
PartComponent	Mandatory	Key
GroupNumber	Optional	See Section 7.10
ConditionNegated	Optional	See Section 7.10

907 10.14 CIM_PolicyRoleCollection

908 CIM_PolicyRoleCollection is an optional class that may be used to to represent a collection of Managed
909 Elements that share a common policy role, and the PolicySets that CAN BE applied to those elements.
910 The PolicyRoleCollection always exists in the context of a System, specified using the
911 PolicyRoleCollectionInSystem aggregation. The value of the PolicyRole property in this class specifies

Policy Profile

912 the role. It is defined as a free-form string. Managed Elements that share the role defined in this collection
913 are aggregated into the Collection via the ElementInPolicyRoleCollection association.

914 Table 28 contains the requirements for elements of this class.

915

916 **Table 28 – Class: CIM_PolicyRoleCollection**

Elements	Requirement	Notes
PolicyRole	Mandatory	See Section 7.12
InstanceID	Mandatory	Key
ElementName	Mandatory	This property shall be formatted as a free-form string of variable length (pattern ".*").

917 **10.15 CIM_PolicyRoleCollectionInSystem**

918 CIM_PolicyRoleCollectionInSystem is a conditional association that shall be used to establish a
919 relationship between an instance of CIM_PolicyRoleCollection and an "owning" CIM_System instance,
920 such as an AdminDomain or ComputerSystem.

921 Table 29 contains the requirements for elements of this class.

922

923 **Table 29 – Class: CIM_PolicyRoleCollectionInSystem**

Elements	Requirement	Notes
Antecedent	Mandatory	Key
Dependent	Mandatory	Key

924 **10.16 CIM_PolicyRuleInSystem**

925 CIM_PolicyRuleInSystem is a mandatory association that shall be used to link a PolicyRule to the System
926 in whose scope the Rule is defined.

927 Table 30 contains the requirements for elements of this class.

928

929 **Table 30 – Class: CIM_PolicyRuleInSystem**

Elements	Requirement	Notes
Antecedent	Mandatory	Key
Dependent	Mandatory	Key

930 **10.17 CIM_PolicySetComponent**

931 CIM_PolicySetComponent is an optional association that may be used to aggregate the instances of the
932 subclasses of PolicySet (i.e., PolicyGroups and PolicyRules). Instances are collected in sets that use the
933 same decision strategy. They are prioritized relative to each other, within the set, using the Priority
934 property of this aggregation. Together, the PolicySet.PolicyDecisionStrategy and PolicySet
935 Component.Priority properties determine the processing for the groups and rules contained in a
936 PolicySet. A larger priority value represents a higher priority. Note that the Priority property MUST have a

937 unique value when compared with others defined for the same aggregating PolicySet. Thus, the
 938 evaluation of rules within a set is deterministically specified.

939 Table 31 contains the requirements for elements of this class.

940

941 **Table 31 – Class: CIM_PolicySetComponent**

Elements	Requirement	Notes
GroupComponent	Mandatory	Key
PartComponent	Mandatory	Key
Priority	Mandatory	See section 7.17

942 **10.18 CIM_PolicySetInRoleCollection**

943 CIM_PolicySetInRoleCollection is an optional association that may be used to aggregate zero or more
 944 PolicyRules and PolicyGroups (i.e., the subclasses of PolicySet) into a PolicyRoleCollection object,
 945 representing a role supported/enforced by the PolicySet.

946 Table 32 contains the requirements for elements of this class.

947

948 **Table 32 – Class: CIM_PolicySetInRoleCollection**

Elements	Requirement	Notes
Collection	Mandatory	Key
Member	Mandatory	Key

949 **10.19 CIM_PolicySetValidityPeriod**

950 CIM_PolicySetValidityPeriod is an optional association that may be used to aggregate scheduled
 951 activation and deactivation of a PolicySet. A PolicySet is considered "active" if it is both "Enabled" and in
 952 a valid time period. If a PolicySet is associated with multiple policy time periods via this association, then
 953 the Set is in a valid time period if at least one of the time periods evaluates to TRUE. If a PolicySet is
 954 contained in another PolicySet via the PolicySetComponent aggregation (e.g., a PolicyRule in a
 955 PolicyGroup), then the contained PolicySet (e.g., PolicyRule) is in a valid period if at least one of the
 956 aggregate's PolicyTimePeriodCondition instances evaluates to TRUE and at least one of its own
 957 PolicyTimePeriodCondition instances also evaluates to TRUE. (In other words, the
 958 PolicyTimePeriodConditions are ORed to determine whether the PolicySet is in a valid time period and
 959 then ANDed with the ORed PolicyTimePeriodConditions of each of PolicySet instances in the
 960 PolicySetComponent hierarchy to determine if the PolicySet is in a valid time period and, if also
 961 "Enabled", therefore, active, i.e., the hierarchy ANDs the ORed PolicyTimePeriodConditions of the
 962 elements of the hierarchy. A Time Period may be aggregated by multiple PolicySets. A Set that does not
 963 point to a PolicyTimePeriodCondition via this association, from the point of view of scheduling, is always
 964 in a valid time period.

965 Table 33 contains the requirements for elements of this class.

966

Policy Profile

967

Table 33 – Class: CIM_PolicySetValidityPeriod

Elements	Requirement	Notes
GroupComponent	Mandatory	Key
PartComponent	Mandatory	Key

968 **10.20 CIM_PolicyTimePeriodCondition**

969 CIM_PolicyTimePeriodCondition is an optional class that may be used to represent the time periods
970 during which a PolicySet is valid, i.e., active. At all times that fall outside these time periods, the PolicySet
971 has no effect.

972 Table 34 contains the requirements for elements of this class.

973

974

Table 34 – Class: CIM_PolicyTimePeriodCondition

Elements	Requirement	Notes
TimePeriod	Optional	See Section 7.20
MonthOfYearMask	Optional	See Section 7.20
DayOfMonthMask	Optional	See Section 7.20
DayOfWeekMask	Optional	See Section 7.20
TimeOfDayMask	Optional	See Section 7.20
LocalOrUtcTime	Optional	See Section 7.20
SystemCreationClassName	Mandatory	Key
SystemName	Mandatory	Key
PolicyRuleCreationClassName	Mandatory	Key
PolicyRuleName	Mandatory	Key
CreationClassName	Mandatory	Key
PolicyConditionName	Mandatory	Key
ElementName	Mandatory	This property shall be formatted as a free-form string of variable length (pattern ".*").

975 **10.21 CIM_ReusablePolicy**

976 CIM_ReusablePolicy is an optional association that may be used to establish dependency relationships
977 between Policies and the Systems that host them.

978 Table 35 contains the requirements for elements of this class.

979

980

Table 35 – Class: CIM_ReusablePolicy

Elements	Requirement	Notes
Antecedent	Mandatory	Key
Dependent	Mandatory	Key

981

982 10.22 CIM_ReusablePolicyContainer

983 CIM_ReusablePolicyContainer is an optional class that may be used to represente an administratively
 984 defined container for reusable policy-related information. This class does not introduce any additional
 985 properties beyond those in its superclass AdminDomain. It does, however, participate in a unique
 986 association for containing policy elements. An instance of this class uses the NameFormat value
 987 "ReusablePolicyContainer".

988 Table 36 contains the requirements for elements of this class.

989

990

Table 36 – Class: CIM_ReusablePolicyContainer

Elements	Requirement	Notes
CreationClassName	Mandatory	Key
Name	Mandatory	Key
ElementName	Mandatory	This property shall be formatted as a free-form string of variable length (pattern ".*").

991

992

993
994
995
996

**ANNEX A
(Informative)

Change Log**

Version	Date	Description

997

998 **ANNEX B**
999 **(informative)**

1000 **Acknowledgments**
1001

1002 The authors wish to acknowledge the following people.

1003 **Editor:**

- 1004 • Jianwen Yin – Dell

1005 **Contributors:**

- 1006 • George Ericson – EMC
1007 • Jon Hass – Dell
1008 • Jianwen Yin – Dell
1009 • Steve Hand – Symantec Corp.
1010 • Aaron Merkin – IBM
1011